

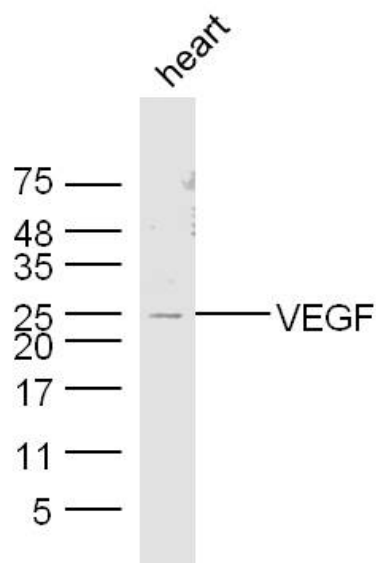
Catalog No. BN42174R

Rabbit Anti-VEGFA Polyclonal Antibody

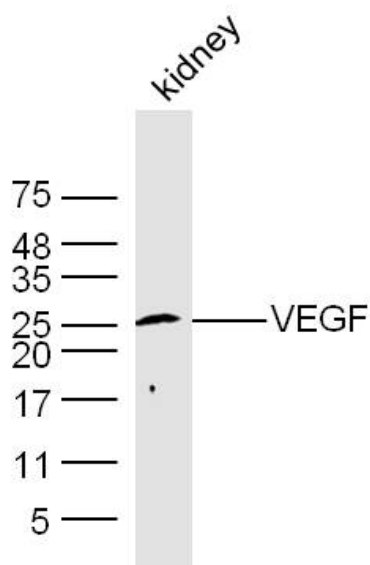
DATASHEET

<p>Host:Rabbit</p> <p>Target Protein:VEGFA</p> <p>IR:Immunogen Range:27-120/232</p> <p>Clonality:Polyclonal</p> <p>Isotype:IgG</p> <p>Entrez Gene:7422</p> <p>Swiss Prot:P15692</p> <p>Source:KLH conjugated synthetic peptide derived from human VEGF:27-120/232</p> <p>Purification:affinity purified by Protein A</p> <p>Storage:0.01M TBS(pH7.4) with 1% BSA, 0.03% Proclin300 and 50% Glycerol. Shipped at 4℃. Store at -20 °C for one year. Avoid repeated freeze/thaw cycles.</p> <p>Background:This gene product is a member of the PDGF/VEGF growth factor family. It is a mitogen that specifically acts on endothelial cells and has various effects, including mediating increased vascular permeability, inducing angiogenesis, vasculogenesis, endothelial cell growth, promoting cell migration, and inhibiting apoptosis. Alternatively spliced transcript variants encoding different isoforms have been found for this gene. Also, alternative translation initiation from non-AUG (CUG) and AUG start sites in some transcript variants, give rise to additional isoforms. [provided by RefSeq].</p>	<p>Concentration:1mg/ml</p> <p>Applications:WB(1:500-2000) ELISA(1:5000-10000) IHC-P(1:100-500) IHC-F(1:100-500) Flow-Cyt(1μg/Test) IF(1:100-500)</p> <p>Cross Reactive Species:Human Mouse .</p> <p>For research use only. Not intended for diagnostic or therapeutic use.</p>
--	--

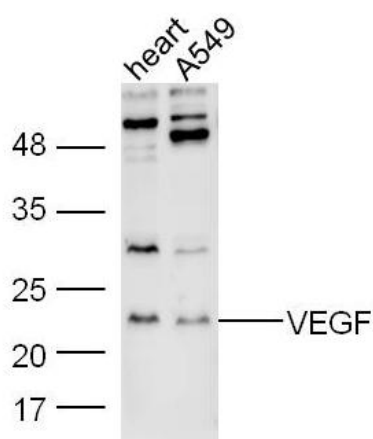
VALIDATION IMAGES



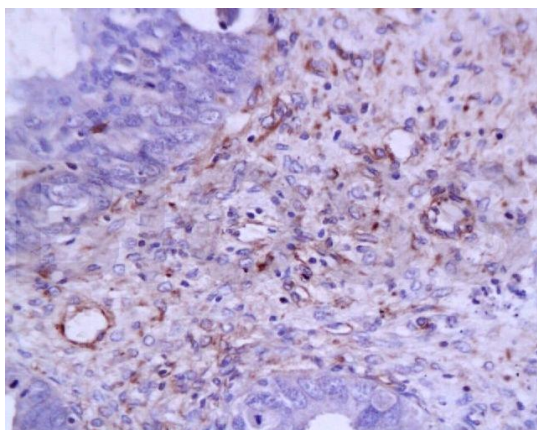
Sample: Heart(Mouse) Lysate at 30 ug
Primary: Anti-VEGF at 1/300 dilution
Secondary: IRDye800CW Goat Anti-Mouse IgG at 1/20000 dilution
Predicted band size: 24 kD
Observed band size: 25 kD



Sample: Kidney(Mouse) Lysate at 30 ug
Primary: Anti-VEGF at 1/300 dilution
Secondary: IRDye800CW Goat Anti-Mouse IgG at 1/20000 dilution
Predicted band size: 24 kD
Observed band size: 25 kD



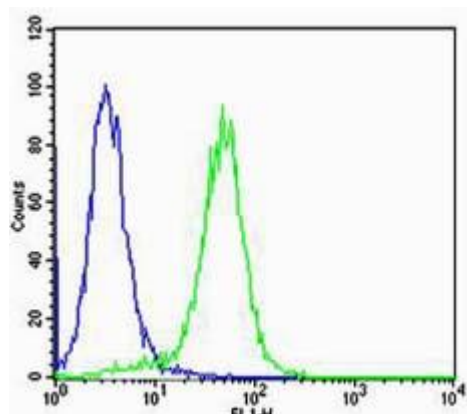
Sample:
heart (Mouse) Lysate at 40 ug
A549 Cell (Human) Lysate at 30 ug
Primary: Anti- VEGF at 1/300 dilution
Secondary: IRDye800CW Goat Anti-Rabbit IgG at 1/20000 dilution
Predicted band size: 24 kD
Observed band size: 24 kD



Tissue/cell: human ovary carcinoma; 4% Paraformaldehyde-fixed and paraffin-embedded;

Antigen retrieval: citrate buffer (0.01M, pH 6.0), Boiling bathing for 15min; Block endogenous peroxidase by 3% Hydrogen peroxide for 30min; Blocking buffer (normal goat serum) at 37°C for 20 min;

Incubation: Anti-VEGF Polyclonal Antibody, Unconjugated 1:200, overnight at 4°C, followed by conjugation to the secondary antibody and DAB staining

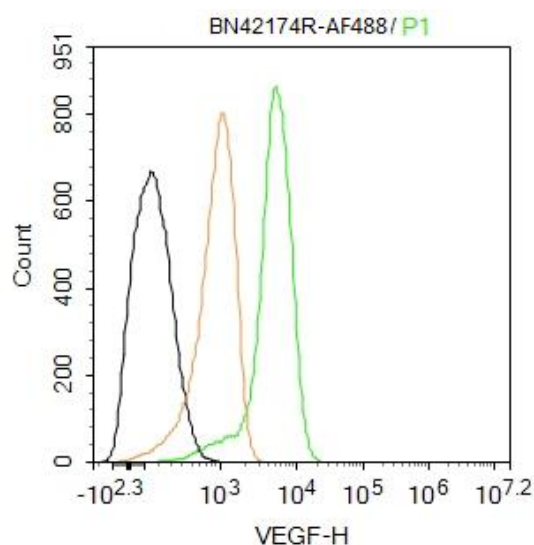


Cell: HeLa

Concentration: 1:100

Host/Isotype: Rabbit/IgG

Flow cytometric analysis of Rabbit antibody on HeLa (green) compared with isotype control in the absence of primary antibody (blue) followed by Alexa Fluor 488-conjugated goat anti-rabbit IgG (H+L) secondary antibody .



Blank control: Raw264.7.

Primary Antibody (green line): Rabbit Anti-VEGF antibody

Dilution: 2ug/Test;

Protocol

The cells were fixed with 4% PFA (10min at room temperature) and then permeabilized with 0.1% PBST for 20 min at room temperature. The cells were then incubated in 5% BSA to block non-specific protein-protein interactions for 30 min at room temperature. Cells stained with Primary Antibody for 30 min at room temperature. Acquisition of 20,000 events was performed.